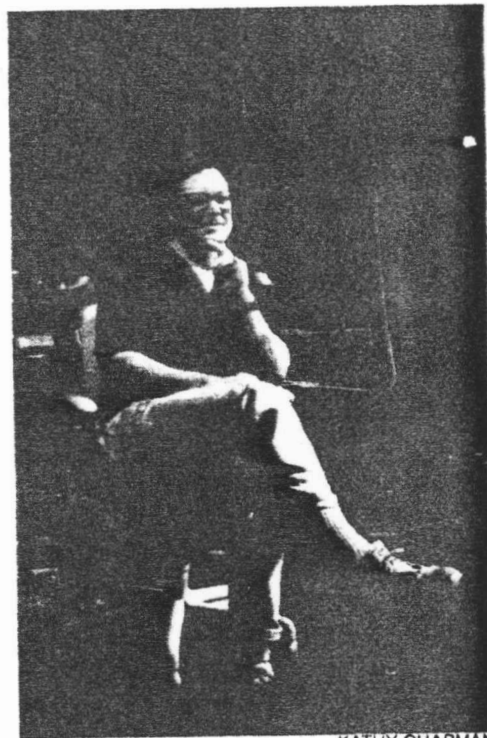


8 DAYS A WEEK

by Gary Susman

THURSDAY: Robert Whitman's surreal and startling works have never been exhibited outside New York and Europe; that changes with the installation of "Black Dirt," at MIT's Experimental Media Facility. It's described as "juxtapositions of film projections, eccentric props, lighting, and sound effects, performed actions and text and spatial shifts" that shatter any traditional concepts of narrative or character. Constructed specifically for MIT's Cube, the work is on view through Saturday, and again from next Thursday to Saturday. Call 253-4680.



KATHY CHAPMAN